

Butterfly Welcome

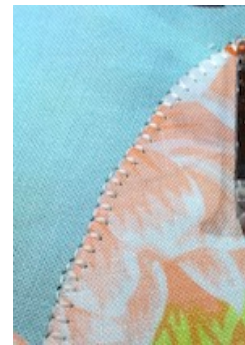


For the Show Your Wings blog hop, we designed a simple butterfly wall hanging. Our sample is an appliquéd piece with the template on the last page. There are also some basic instructions for a pieced block as well. Finished size 14" x 18".

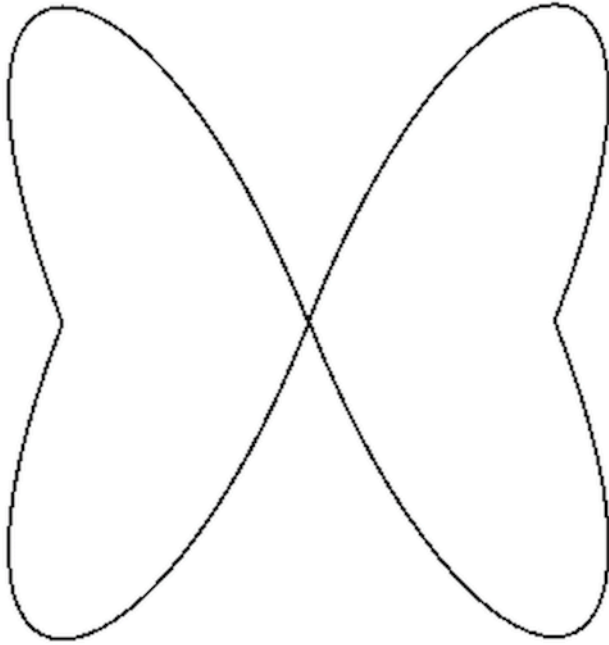
Ingredients:

- 12 – charm blocks (5" squares)
- 6 – charm block prints for the butterflies
- 16" x 20" batting and scrap fabric for backing
- 2 – 3" squares for corner hanging tabs

1. This little Butterfly Welcome wall hanging was made especially for the blog hop.
2. The wings were drawn in EQ8 using two mirrored elongated heart shapes
3. We laid out our 5" squares in a 3 by 4 pattern. The top row are white squares representing clouds, followed by two rows of blue for the sky and one row of green for grass.
4. Some Kaffe Rowan prints were selected for their print values; the butterfly shape was traced on the reverse side of the fabrics using the template provided
5. Each wing was cut out separately and pinned to the squares for appliqué in a pleasing layout
6. The wings were raw-edge appliquéd using a machine buttonhole stitch, but use whichever method you are most comfortable with
7. Once the quilt top is finished, layer on to a scrap piece of batting and backing fabric
8. An overall meander stitch was chosen for the quilting design to mimic the flitty path a butterfly may take
9. Three-inch squares were ironed in half diagonally and pinned in place before the binding finish was added.
10. We use a dowel inserted within the tabs to hang this Butterfly Welcome on our front door.
11. We have included a pieced butterfly block for those of you that do not like to appliqué
12. Check out our blog post for more details



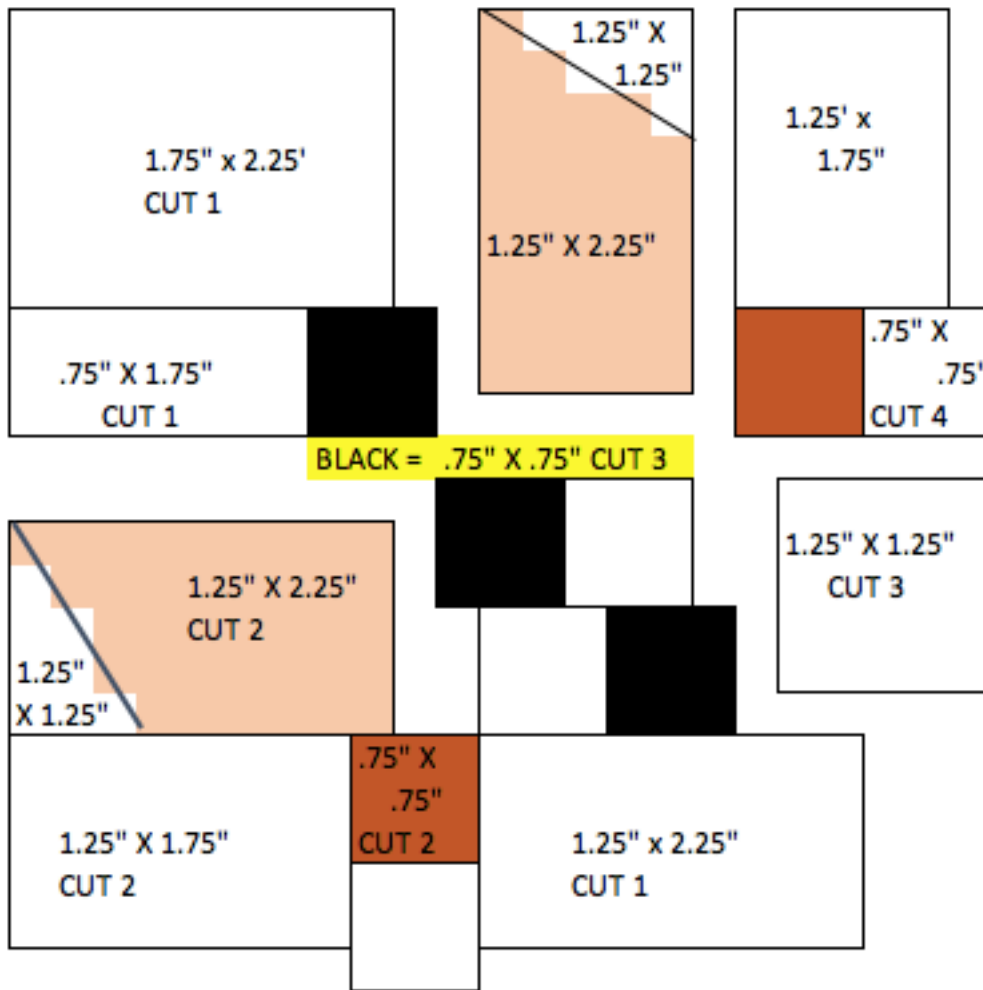
Butterfly Welcome



These appliqued butterfly wings are 3.5" square. Please measure your printed page to ensure the scale is correct.

Butterfly Welcome

Pieced Butterfly Block:



Pieced Butterfly Block:

- = Background White
- 1.75" x 2.25" - cut 1
- .75" x 1.75" - cut 1
- 1.25" x 1.25" - cut 3
- 1.25" x 1.75" - cut 2
- .75" x .75" - cut 4
- 1.25" x 2.25" - cut 1
- = Large wing Light Orange
- 1.25" x 2.25" - cut 2
- = Small wing Dark Orange
- .75" x .75" - cut 2
- = Black Body
- .75" x .75" - cut 3

Draw a diagonal line on the back of two 1.25" squares. Align on the corner of the large wing and sew on

Trim 1/4" away from the seam and press toward the darker fabric. Layout your pieces as shown and sew together.

You will need six separate butterflies for the wall hanging