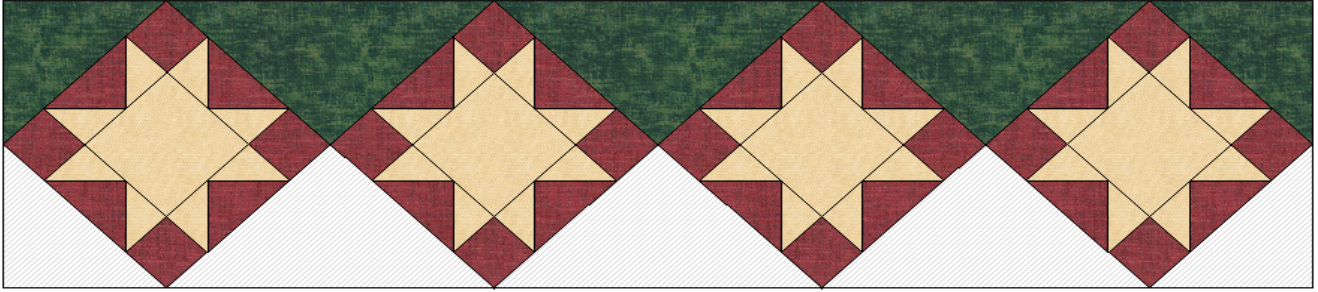


Christmas in July Mantle Quilt (a.k.a. hope chest quilt)



Finished Size: 45.5" x 12" (plus 19" for the chest width)


Fabric Requirements:

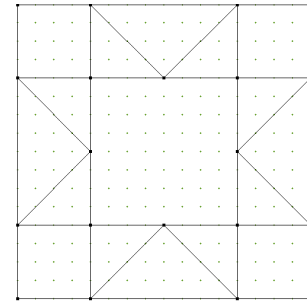
Burgundy 1/3 yard
 Cream 1/3 yard
 Green fat 1/4 yard (plus additional for width of mantle/chest)

Cutting Directions:

Burgundy 16 – 2.5" squares
 16 – 3-3/8" squares for HSTs (half square triangles)

Cream 4 – 4.5" squares
 16 – 3 3/8" squares for HSTs

Green 1 – 6 1/2" square cut in half diagonally
 1 – 12 1/2" square cut in 4ths diagonally  (only 3 are used)
 1 – 46" x 19.5" rectangle (or depth of your mantle)



Assembly Directions:

Construct the four sawtooth star blocks:

Place 3-3/8" burgundy and cream squares right sides together. Draw a line diagonally corner to corner. Sew 1/4" on BOTH sides of the line. Cut on the drawn line. Press seam open, then trim to 2.5" square. Make 32.



Layout the squares for each sawtooth star as follows:

- Row 1: B2.5", HST, HST, B2.5"
 - Row 2: HST, C4.5", HST
 - Row 3: HST, (C4.5"), HST
 - Row 4: B2.5", HST, HST, B2.5"
- B=Burgundy, C=Cream



Be sure to place the HST the correct way!

- Sew row 1 pieces together. Press seam open between HSTs, press other two seams toward burgundy.
- Individually sew row 2 and 3 HSTs together on each side of C4.5" square. Press seam open.

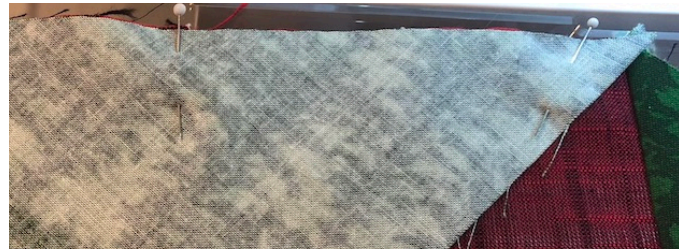
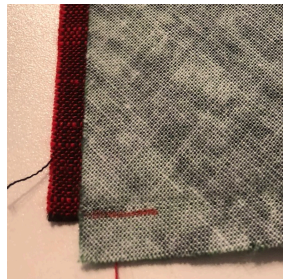
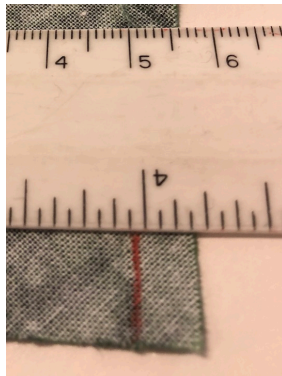
Christmas in July Mantle Quilt (a.k.a. hope chest quilt)

- Sew HSTs to each opposite side of C4.5" square. Press seam toward cream
- Repeat the process for row 4 pieces, sewing together the same as row 1.
- Finally, sew row 1 to row 2/3. Then add row 4 to rows 1/2/3. Press as desired.

Add the larger green triangles:



- Layout a large triangle and two stars
- On each of the larger green triangles mark $\frac{1}{4}$ " in from the 90-degree corner on the wrong side
- Line up one 90-degree edge to one side of a star, right sides together, starting at the $\frac{1}{4}$ " mark – pin if desired (I did) and then stitch
- A small point will extend past the edge of the star



- Line up the other side of the 90-degree triangle on the second star. You will be starting $\frac{1}{4}$ " away from the edge again (which is the seam from the first star block)
- Continue these steps using only three of the triangles
- Your two triangles should meet something like this with the star blocks on point



Add the small triangles to each end star

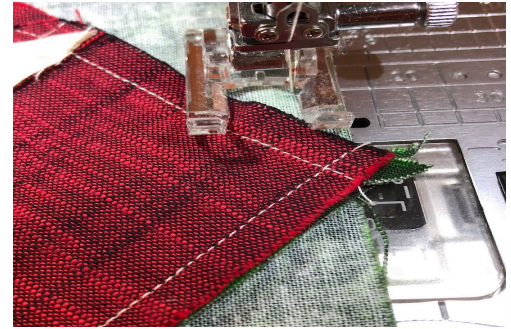
- Fold the triangle in half along the long edge, matching the points
- Crease with your finger on the wrong side (I marked with a pin)
- Match that center crease of the triangle with the seam between the two HSTs on the star (the center of the star block) putting right sides together
- Tack with a pin so the triangle doesn't move; add a few more pins if desired
- Stitch – there will be triangle points hanging off each side
- Press toward the green fabric
- Repeat these steps on the other end star block



Christmas in July Mantle Quilt (a.k.a. hope chest quilt)

Determine the depth of your mantle

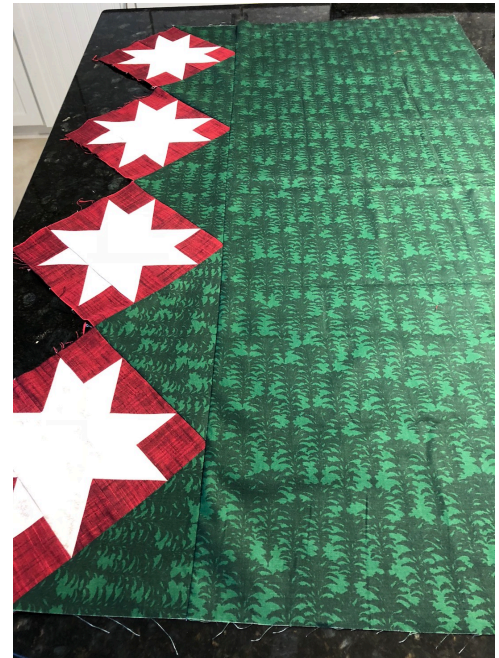
- Our mantle depth is 7" but we chose to make this covering for a chest instead. The chest was a hope chest that belonged to my mother and is almost 100 years old. The width of the chest is 19". We used that number plus ½" for seam allowances for our piece to add to the stars.
- We cut a piece of the green fabric 46" x 19.5"
- With right sides together, layer the star-pieced-green triangles with this rectangle
- Sew the seam the length of the rectangle
- I sewed with the star side on the top so that I could ensure the points were not cut off



Finishing the Mantle Quilt

Here is our mantle quilt prior to quilting and layering. We chose to add a binding as finishing, but you may choose an alternative method.

- The next step is to layer and quilt as desired
- We chose straight-line lengthwise on the green fabric, and in the opposite direction on the four stars
- A matching green thread was used for quilting on the green fabric, while a light yellow was used on the stars
- We added a green binding around the entire piece and hand tacked it to the wrong side
- A tip for the interior corners on the binding is to clip the corner just less than ¼". Then when you are stitching down the binding, pull the 90° angle straight. You will need to gather the bulk of the quilt away from the pressor foot. Then when you tack the binding down it will fold into a mitered corner like usual.



Use and enjoy!

You can find more information on our blog, www.homesewnbyus.com

